



MINERVA

GD9601A SFF-8654 8i x2 to PCIe x16 Slot with Hot Plug

Performance & Burn In Test Rev 1.0

Table of Contents

1. Overview

2. Performance Measurement Tools and Results
 - 2.1 Test Platform
 - 2.2 Test target and ASUS ReForce RTX 3080
 - 2.3 Install Hardware
 - 2.4 BIOS & Windows 10 OS environment setup
 - 2.5 TechPowerUp GPU-Z 2.51.0

3. Burn In Tests and Results
 - 3.1 BurnInTestv10.2 Pro burn in test

4. Summary

GD9601A Adapter

1. Overview

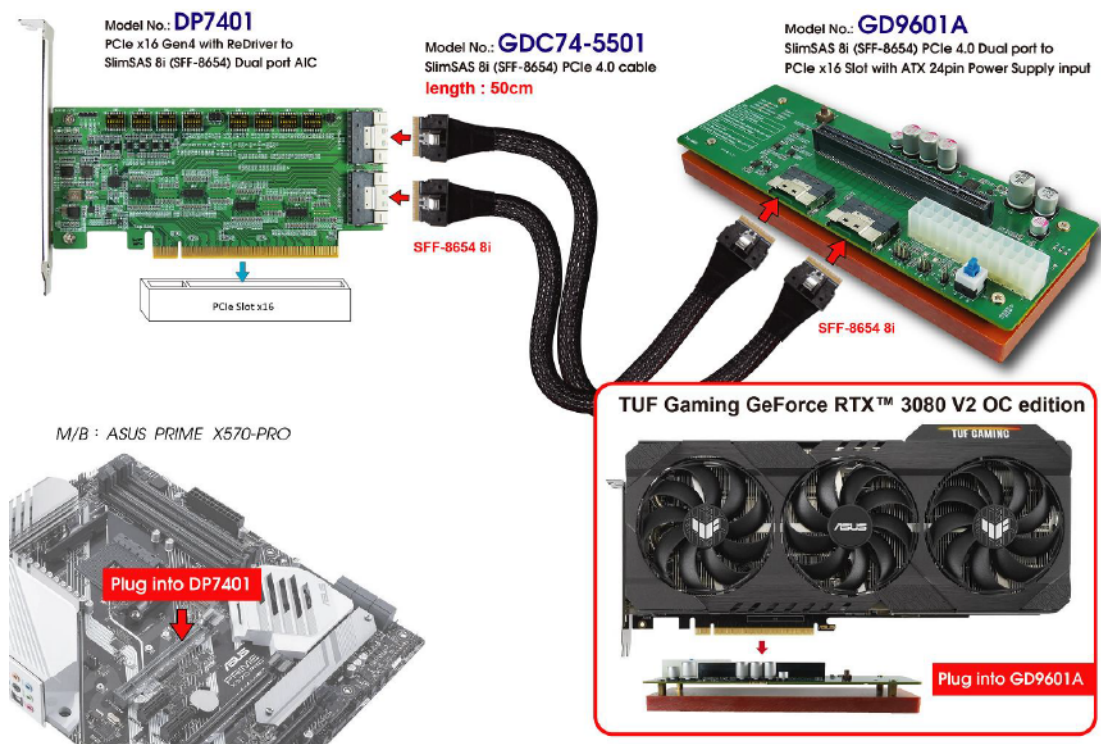
The DP7401 AIC has built-in ReDriver and is with SlimSAS 8i(SFF-8654) dual port connector. It is designed for use by PCIe x16 to be bifurcated four x4 link width or can extend PCIe x16 signals channel reach. The PCIe 4.0 ReDriver may support CTLE boosts up to **13 dB**.

2. Tools and Results of Performance Measurement

2.1 Test Platform

M/B : ASUS **PRIME X570-PRO**
CPU : AMD **Ryzen 7, 3700X 8-Core**
Memory : Kingston **KVR26N19D8/16, DDR4-2666MHz, 32GB**(16GB DIMM*2)
ATX Power : COOLER MASTER G750M, **750W ATX**, 12V V2.2 Power Supply
Add in Card: DP7401 PCIe x16 with ReDriver to SlimSAS 8i(SFF-8654) dual port AIC
Cable: PCIe 4.0 SFF-8654 8i, 50cm Cable
Adapter: GD9601A SlimSAS 8i(SFF-8654) dual port to PCIe 4.0 x16 Slot adapter
OS : Microsoft **Windows 10 64bit OS**

2.2 Test target: DP7401, GD9601A adapter & ASUS **TUF-RTX3080-O10G-GAMING**



GD9601A Adapter

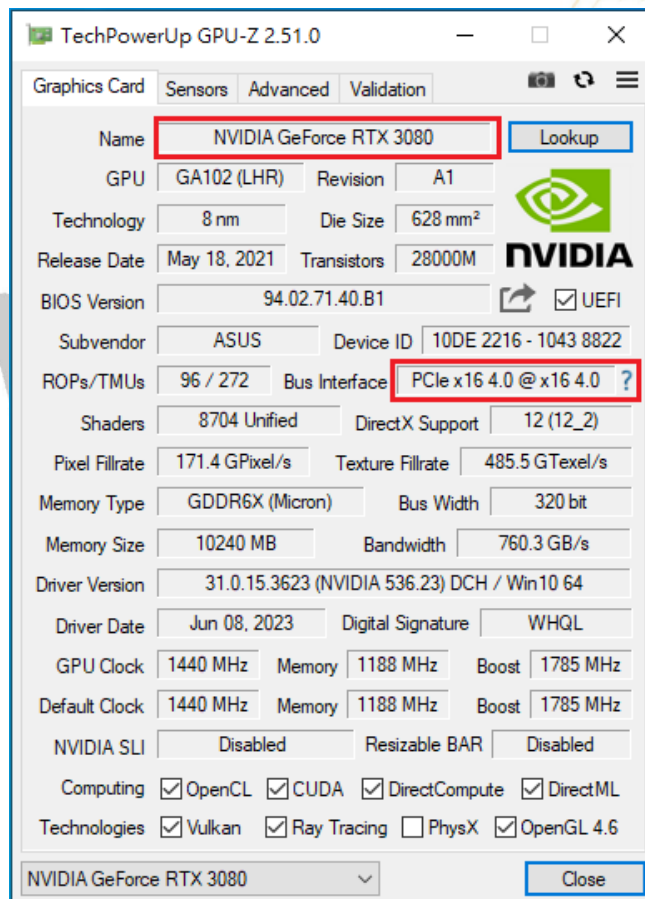
2.3 Install Hardware

First inserts the ASUS **TUF-RTX3080-O10G-GAMING** into the GD9601A PCIe X16 slot and connects the GD9601A adapter to the DP7401 AIC card (PCIe x16 Gen 4 with ReDriver to SFF-8654 8i dual port), using the **GDC74-5501, 50cm(8654 8i male to male)** Cable, and then Plugs DP7401 AIC into PCIe x16 Slot of ASUS **PRIME X570-PRO** mainboard.

2.4 BIOS & Windows 10 OS environment setup

2.4.1 Primary SATA NVMe SSD install Windows 10 OS.

2.5 **TUF-RTX3080-O10G-GAMING** Information:

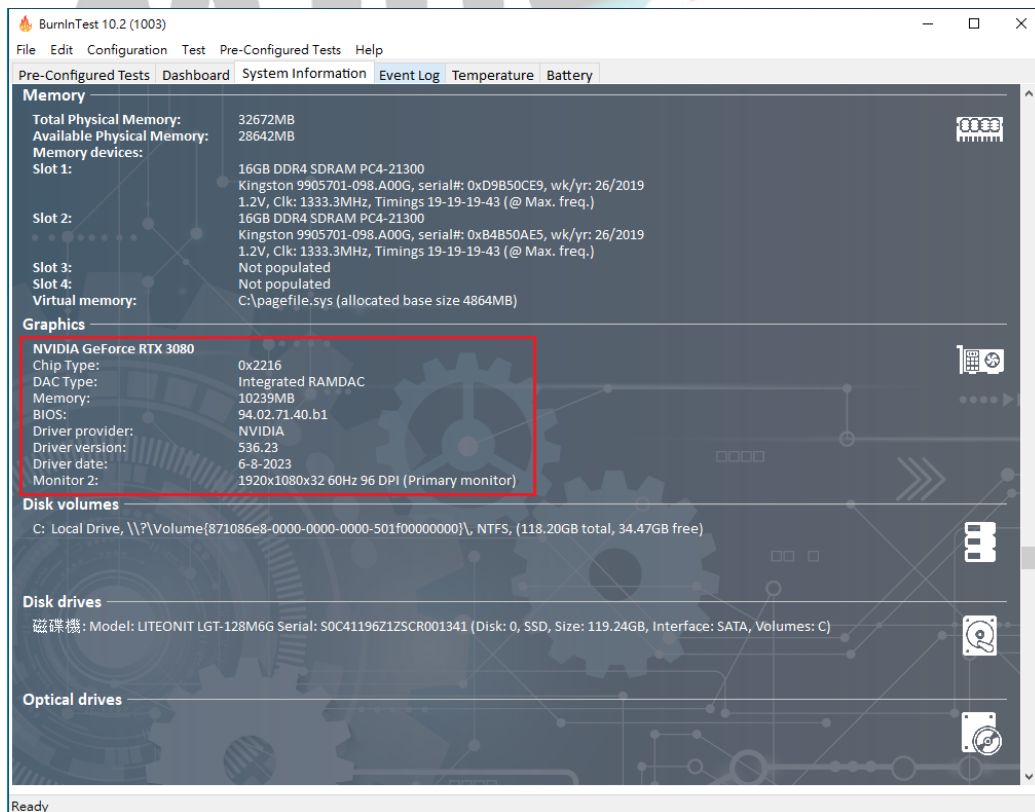
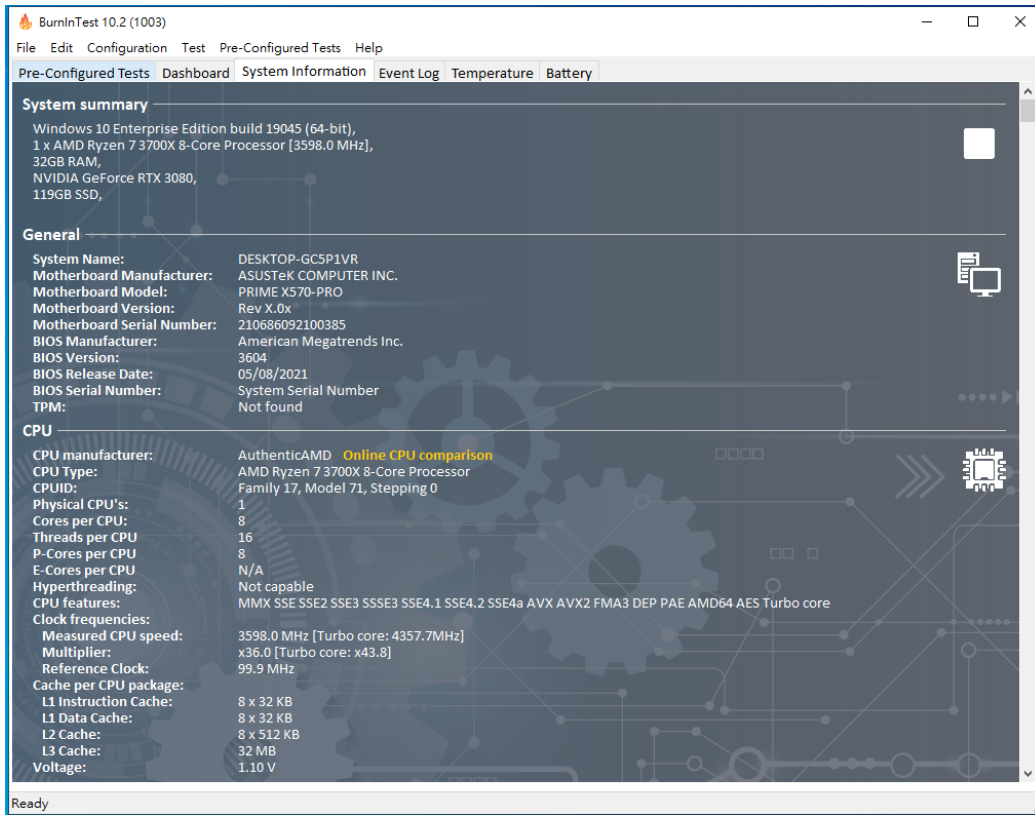


GD9601A Adapter

3. Burn In Tests and Results

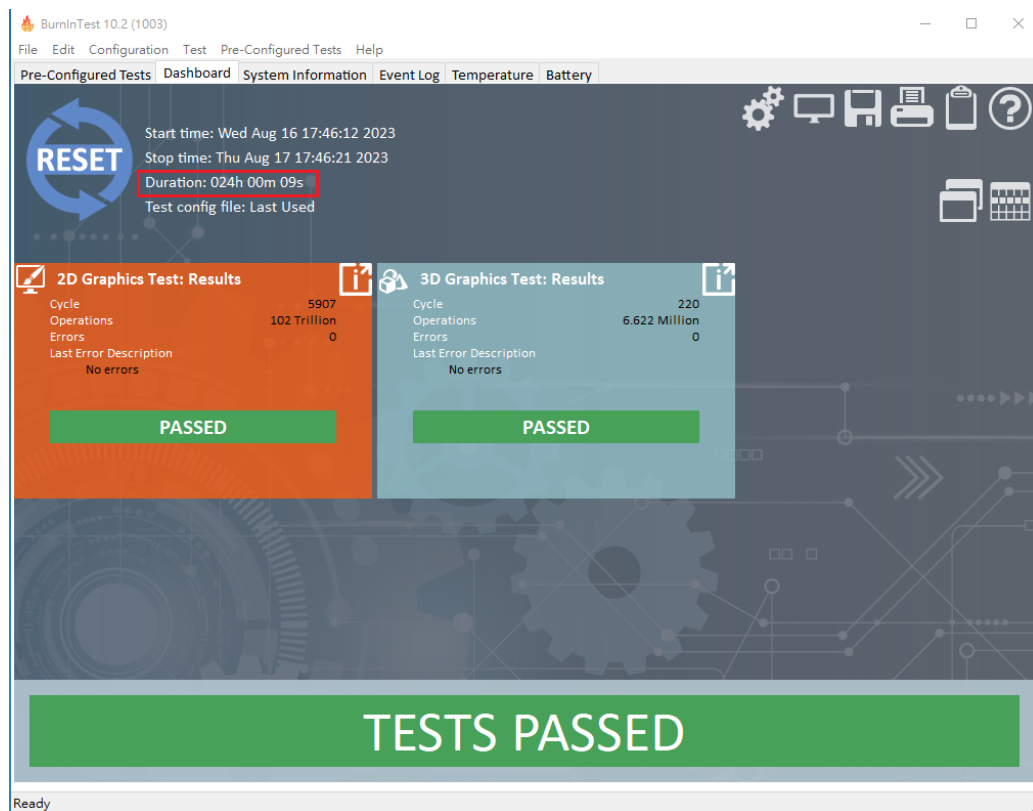
3.1 BurnInTest v10.2 Pro

3.1.1 system information as below:



GD9601A Adapter

3.1.2 2D Graphics & 3D Graphics 24-hour Burn-in test **PASSED**



4. Summary

- 4.1 ASUS **TUF-RTX3080-O10G-GAMING** is PCIe 4.0 x16 link data width.
- 4.2 DP7401 AIC & GD9601A Adapter I/O performance is based on Graphic card.