

## R2031D 安裝說明

### 準備事項:

1. 首先檢查以下所列配件清單. 如有短少, 請聯繫當地經銷商.
2. 請閱讀安裝流程說明.

### 組裝套件A- 安裝mini PCI-e SSD 進R2031D轉接卡

(1)M2x6mm(H) 螺絲 \*3pcs  
P/N: 13MISW00001M11



(2)合金銅柱 /H: 4.0mm \*3pcs  
P/N: 13MICA00001M05



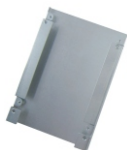
(3)M2螺帽 \*3pcs  
P/N: 13MINU00001M11



以上零件皆有多附各一个為備用

### 組裝套件2 - 安裝轉接卡進 2.5" SSD 外殼

(B-1)2.5" 鋁質外殼 \*1pc  
P/N: 13MI2100001M25



(B-2)M2x3 螺絲\*5pcs  
P/N: 13MISW00005M11



M2x3 螺絲多附一个為備用

### mini PCI-e SSD組裝

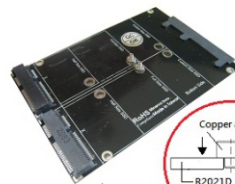
步驟1：將轉接卡翻於背面,選擇您mini PCI-e SSD長度適合的螺絲孔位,並將(A-1)M2x6mm及(A-2)合金銅柱組裝於轉接卡上(如圖步驟1)。

步驟2：插入您的mini PCI-e SSD, 將mini PCI-e SSD 往下壓,使mini PCI-eSSD的固定孔對準兩銅柱孔(如圖步驟2)。

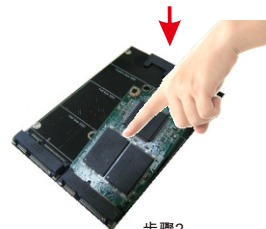
步驟3：使用(A-3)M2螺帽將mini PCI-e SSD固定於轉接卡上(如圖步驟3)。

-----兩塊mini PCI-e SSD 皆使用相同安裝模式-----

步驟4：將轉接卡轉為正面 ( SATA 22針針脚朝上),然後將轉接卡組裝於(B-1)2.5" 鋁質外殼中, 使用(B-2)M2x3mm螺絲將轉接卡與外殼固定(如圖步驟4)即完成組裝動作。



步驟1



步驟2



步驟3



步驟4

# R2031D Assembly Guide

Before Assembling:

1. Please check all accessories as below. If there is any shortage, please contact your local distributor.
2. Please read assembly guide carefully

Accessory Pack (A) – mini PCI-e SSD on adapter

(A-1) M2x6mm(H) screw \*3pcs  
P/N: 13MISW00003M11



(A-2) copper alloy /H: 1.6mm \*3pcs  
P/N: 13MICA00001M05



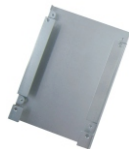
(A-3) M2 nut \*3pcs  
P/N: 13MINU00001M11



The above accessories parts are all have extra 1pc for spare part.

Accessory Pack (B) – assembly adapter on 2.5" SSD housing

(B-1) 2.5" Aluminum Housing \*1pc  
P/N: 13MI2100001M25



(B-2) M2x3 screw \*5pcs  
P/N: 13MISW00005M11



M2x3 screw have extra 1pc for spare part.

mini PCI-e SSD assembly guide

Step 1: Screw (A-1) M2x6mm & (A-2) copper alloy on the suitable holes (half/custom/full size) for your mini PCI-e SSD module as picture (1).

Step 2: Insert your mini PCI-e SSD module to mini PCI-e connector. Press down SSD module as picture (2)

Step 3: Screw SSD module with (A-3) M2 Nut to fix on adapter as picture (3).

-----Two mini PCI-e SSD are using the same installation -----

Step 4: Upright top side of adapter. Assemble adapter into (B-1) 2.5" SSD aluminum housing with 4pcs of (B-2) M2x3 screw to fix as picture (4).

