

R2031D 安装说明

准备事项:

1. 首先检查以下所列配件清单. 如有短少, 请联系当地经销商.
2. 请阅读安装流程说明.

组装套件A- 安装mini PCI-e SSD 进R2021D转接卡

(1)M2x6mm(H) 螺丝 *3pcs
P/N: 13MISW00001M11



(2)合金铜柱 /H: 4.0mm *3pcs
P/N: 13MICA00001M05



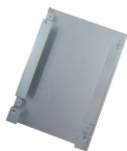
(3)M2螺帽 *3pcs
P/N: 13MINU00001M11



以上零件皆有多附各一个为备用

组装套件2 - 安装转接卡进 2.5" SSD 外壳

(B-1)2.5" 铝质外壳 *1pc
P/N: 13MI2100001M25



(B-2)M2x3 螺丝*5pcs
P/N: 13MISW00005M11



M2x3 螺丝多附一个为备用

mini PCI-e SSD 组裝

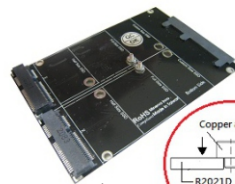
步骤1: 将转接卡翻于背面,选择您mini PCI-e SSD长度适合的螺丝孔位,并将(A-1)M2x6mm及(A-2)合金铜柱组裝于转接卡上(如图步骤1)。

步骤2: 插入您的mini PCI-e SSD, 将mini PCI-e SSD 往下压,使mini PCI-e SSD的固定孔对准两铜柱孔(如图步骤2)。

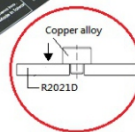
步骤3: 使用(A-3)M2螺帽将mini PCI-e SSD固定于转接卡上(如图步骤3)。

-----两块mini PCI-e SSD 皆使用相同安装模式-----

步骤4: 将转接卡转为正面 (SATA 22针针脚朝上),然后将转接卡组裝于(B-1)2.5" 铝质外壳中, 使用(B-2)M2x3mm螺丝将转接卡与外壳固定(如图步骤4)即完成组裝动作。



步骤1



步骤2



步骤3



步骤4

R2031D Assembly Guide

Before Assembling:

1. Please check all accessories as below. If there is any shortage, please contact your local distributor.
2. Please read assembly guide carefully

Accessory Pack (A) – mini PCI-e SSD on adapter

(A-1) M2x6mm(H) screw *3pcs
P/N: 13MISW00003M11



(A-2) copper alloy /H: 1.6mm *3pcs
P/N: 13MICA00001M05



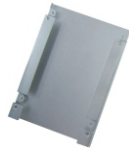
(A-3) M2 nut *3pcs
P/N: 13MINU00001M11



The above accessories parts are all have extra 1pc for spare part.

Accessory Pack (B) – assembly adapter on 2.5" SSD housing

(B-1) 2.5" Aluminum Housing *1pc
P/N: 13MI2100001M25



(B-2) M2x3 screw *5pcs
P/N: 13MISW00005M11



M2x3 screw have extra 1pc for spare part.

mini PCI-e SSD assembly guide

Step 1: Screw (A-1) M2x6mm & (A-2) copper alloy on the suitable holes (half/custom/full size) for your mini PCI-e SSD module as picture (1).

Step 2: Insert your mini PCI-e SSD module to mini PCI-e connector. Press down SSD module as picture (2)

Step 3: Screw SSD module with (A-3) M2 Nut to fix on adapter as picture (3).

-----Two mini PCI-e SSD are using the same installation -----

Step 4: Upright top side of adapter. Assemble adapter into (B-1) 2.5" SSD aluminum housing with 4pcs of (B-2) M2x3 screw to fix as picture (4).

