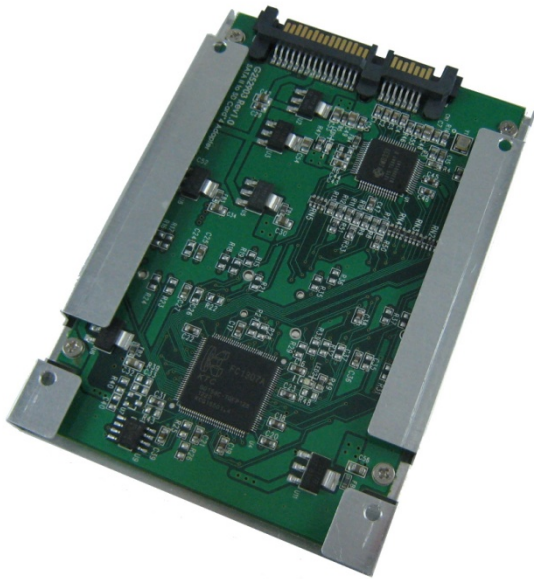




L914D

SATA Adapter for SD Card 4-port with 2.5" Housing



L914D is an economical 2.5" SSD. It uses a 2.5" ultra-lightweight aluminum material shell, coupled with the SD Card combination to SATA adapter. When assembled, it can operate in a variety of operating systems. Such as DOS, Windows 95, 98, XP, 2000, Vista, Win 7, Linux, Unix, and so on. L914D adapter allows the installation of SD Card as system disk, boot the operating system directly, without having to install any drivers.

Specifications:

- Fully compliant with SATA revision 2.6
- Fully compatible with the SDHC 2.0 as well as the Compact-Flash standard 4.1
- Fully compliant with SFF-8223 specification for 2.5" Drives Form Factor with SATA 7+15pin Connector
- Fully compliant with Intel Common Building Block HDD Platform
- Built-in RAID 0 functions which can speed/size up 4-channel SDHC host interface to SATA interface.
- Support SD Card Physical Dimensions:
 - Length: 32mm +/- 0.1 mm
 - Width: 24 mm +/- 0.1 mm
- Operating temp. – Commercial (0°C to +70°C)

Application:

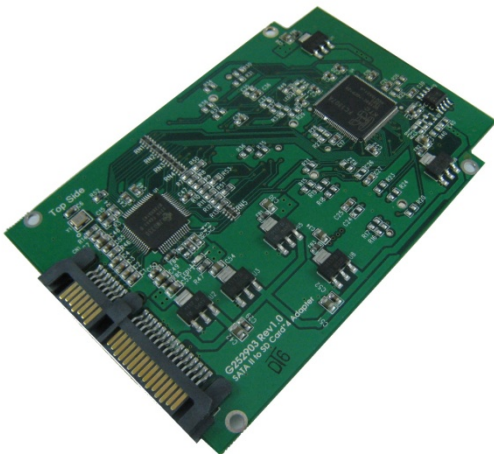
- Desktop, Notebook, Tablet PC
- Internet Appliances, Kiosks
- Industrial Computers, Embedded Machine
- Routers, Firewalls

Support SD CARD:

- Single port of SD card capacity MAX. to 32GB
- Dual port of SD card capacity MAX. to 64GB
- Full 4 port of SD card capacity MAX. to 128GB

Ordering information:

- L914D -- 4-port SD to SATA adapter with 2.5" Housing



MINERVA INNOVATION COMPANY

9F, 227, Sec. 3, Jhongsing Road, Sindian Dist, New Taipei City, 23114, Taiwan, R.O.C.

Tel: 886 2 29158477

Fax: 886 2 29129025

<http://www.minerva.com.tw>

e-mail: sales@minerva.com.tw