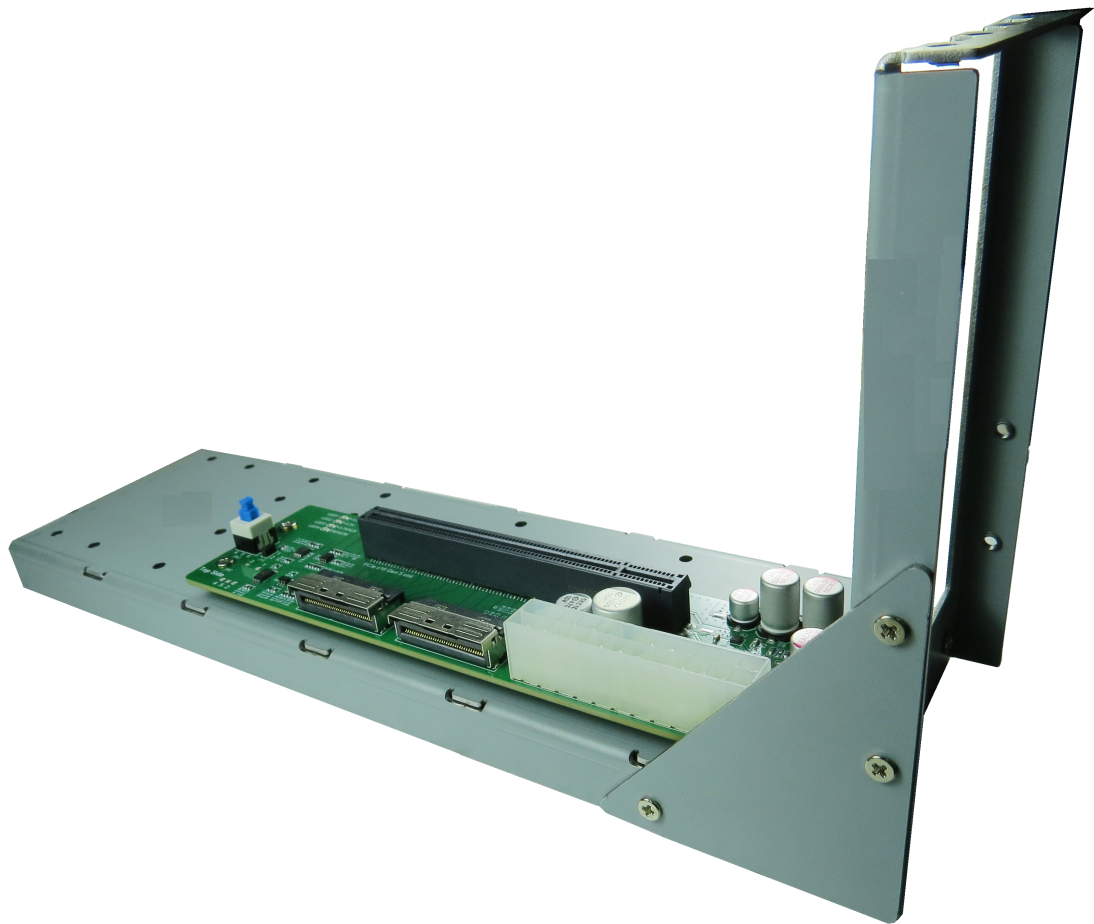


Innocard

Minerva

GE0365L

MCIO 74P Dual Port to PCIe 5.0 x16 Slot



MCIO 74P Dual port to PCIe 5.0 x16 slot

Features

- ※ MCIO 74P dual port to PCIe x16 data link width convert
- ※ Built-in MCIO 74P connector x2pcs with 30u"(0.76um) min Au mating area plating
- ※ Built-in PCIe 5.0 x16 Slot with 30u"(0.76um) min Au mating area plating
- ※ Built-in ATX 24-pin Power supply connector
+5VSB Input with Bidirectional TVS(TRANSIENT VOLTAGE SUPPRESSOR)
Manul Switch ON or Jumper Short for ATX 24-pin Power supply ON
- ※ Built-in MAX5954A PCI Express Power Hot-Plug Controller
Hot Swaps +12V, +3.3V, and 3.3V Auxiliary Power Rail
Active Current Limiting Protects Against Overcurrent/ Short-Circuit Conditions
Drives two external n-channel MOSFETs to control the +12V and +3.3V main outputs
- ※ Built-in Conductive Polymer Aluminum Solid Capacitors
- ※ For 75W PCIe x16 Slot Power Supply Rail Requirements as follows:
+12V Voltage Supply Current Capacitive Load : 5.5 A current, 1470 μ F
+3.3 Voltage Supply Current Capacitive Load : 3 A current, 2300 μ F
3.3aux Voltage Supply Current Capacitive Load : 375 mA current, 330 μ F
- ※ Built-in PCIe PERST# Bus Buffer & Programmable-Delay Supervisory Circuit
- ※ Built-in PCIe WAKE# Auto-Bidirectional Multi-Voltage Level Translator
- ※ Built-in PCIe CLKREQ# Auto-Bidirectional Multi-Voltage Level Translator
- ※ Built-in SMBus Hot Swappable Bus and Buffer
- ※ Through MCIO 74P(CN1) B8 pin connects to PCIe x16 Slot B30 pin
- ※ Through MCIO 74P(CN1) A12 pin connects to PCIe x16 Slot B12 pin
- ※ LED1 PCIe +12V power ready
- ※ LED2 PCIe +3.3V power ready
- ※ LED3 PCIe 3.3Vaux power ready
- ※ LED4 ON to OFF indicated PCIe PERST# OK

Specifications

- ※ Support PCI Express Base Specification Rev 5.0
- ※ Compliant with PCIe_CEM_R5_V1.0_06092021_NCB
- ※ Compliant with SFF-TA-1016 Rev 1.3

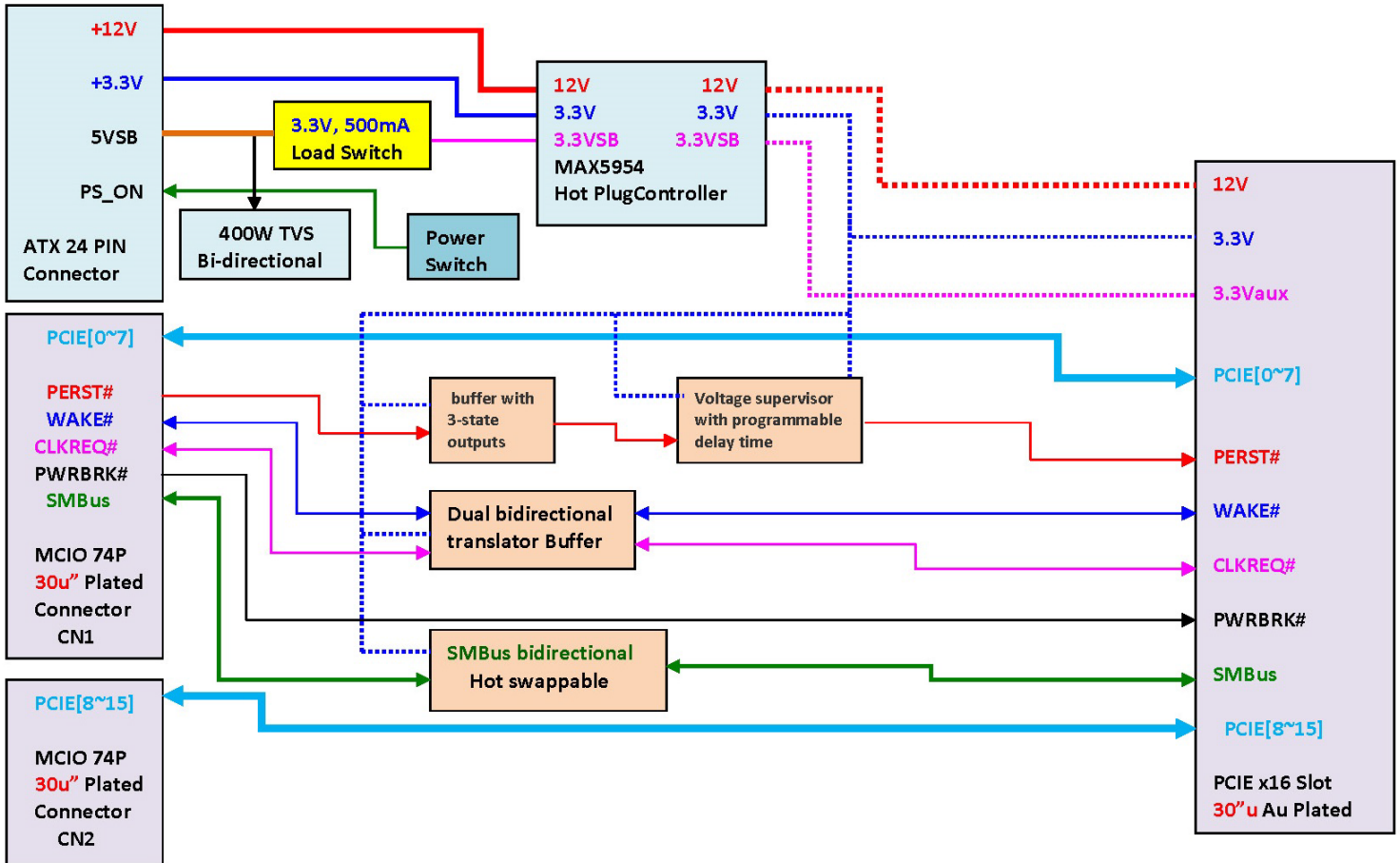
Operating system support

- ※ Windows 8 &8.1
- ※ Windows 10
- ※ Windows 11
- ※ Linux
- ※ VMware

Applications

- ※ Rack server
- ※ Microserver and Tower server
- ※ High performance computing
- ※ Hareware accelerator
- ※ Storage Controller HBA(Host Bus Adapter)
- ※ Desktop PC/motherboard

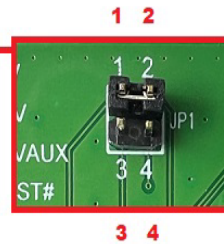
MCIO 74P Dual port to PCIe 5.0 x16 slot Block diagram



MCIO 74P Dual port to PCIe 5.0 x16 slot

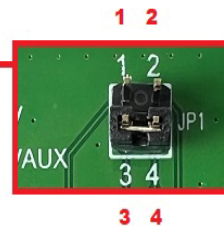
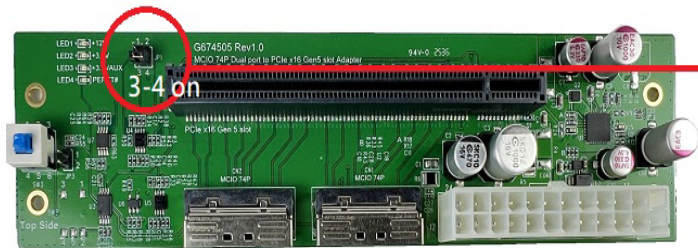
The Switch settings are as noted below :

Case 1. 1-2 on PWRBRK# from CN1 A11pin tied to PCIe Slot B30 pin



1-2: on PWRBRK#
from CN1 A11 pin tied to PCIe Slot B30 pin

Case 2. 3-4 on CLKREQ# from CN1 B8 pin tied to PCIe Slot B11 pin



3-4: on CLKREQ#
from CN1 B8 pin tied to PCIe Slot B11 pin