



MINERVA

CB949MB Converter Card

Performance & Burn In Test Rev. 1.0

Table of Contents

- 1. Overview**

- 2. Performance Measurement Tools and Results**
 - 2.1 Test Platform
 - 2.2 Test target and Using 2.5" IDE SSD
 - 2.3 Install Hardware
 - 2.4 BIOS & Windows 7 OS environment setup
 - 2.5 CrystalDiskMark 3.0.1 x64 performance test
 - 2.6 TxBENCH Benchmark 0.95 Beta performance test
 - 2.7 HD Tune pro 5.5 performance test
 - 2.8 ATTO Disk v2.47 BenchMark performance test
 - 2.9 AnvilBenchmark_RC6 performance test

- 3. Burn In Tests and Results**
 - 3.1 BurnInTestv7.1 Pro burn in test

- 4. Summary**

CB949MB / IDE 2.5" 44pin SSD to SATA

1. Overview

CB949MB adapter card provides IDE 44pin connector. It supports IDE 2.5" SSD to SATA 7+15pin interface.

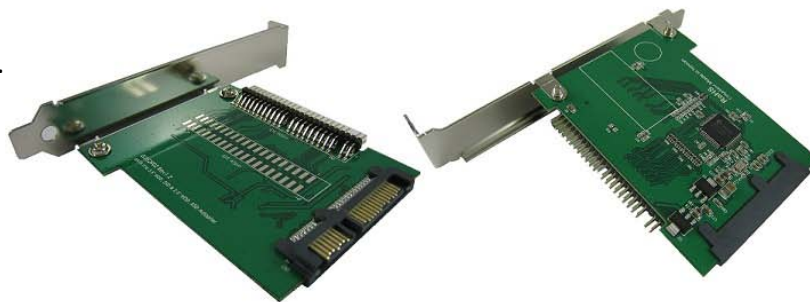
2. Tools and Results of Performance Measurement

2.1 Test Platform

M/B : GIGABYTE [GA-X58A-UD3R](#)
CPU : Intel [i7-930](#), 2.8MHz/ 8G Cache/ 4.8GT
Memory : Kingston [KVR1333D3N9/2G](#), 1333MHz,2G Byte DIMM*2
ATX Power : TC START W500, [500W ATX](#),12V V2.2 Power Supplier
Graphic : Asus NVIDIA, [Geforce 210](#)
OS : Microsoft [Windows 7 64bit OS](#)

2.2 Test target: CB949MB adapter and used IDE 2.5" SSD

2.



CB949MB Top Side

CB949MB Bottom Side



KingSpec 64G IDE SSD

Hardware

The use of two-terminal female 44pin cable. Plug one end into KingSpec [64G/ KSD-PA25.6-064MS](#) SSD, the other end into CB949MB 2.5" IDE 44pin connector. Connect CB949MB converter to SATA port of GA-X58A-UD3R motherboard.

2.4 BIOS & Windows 7 OS environment setup

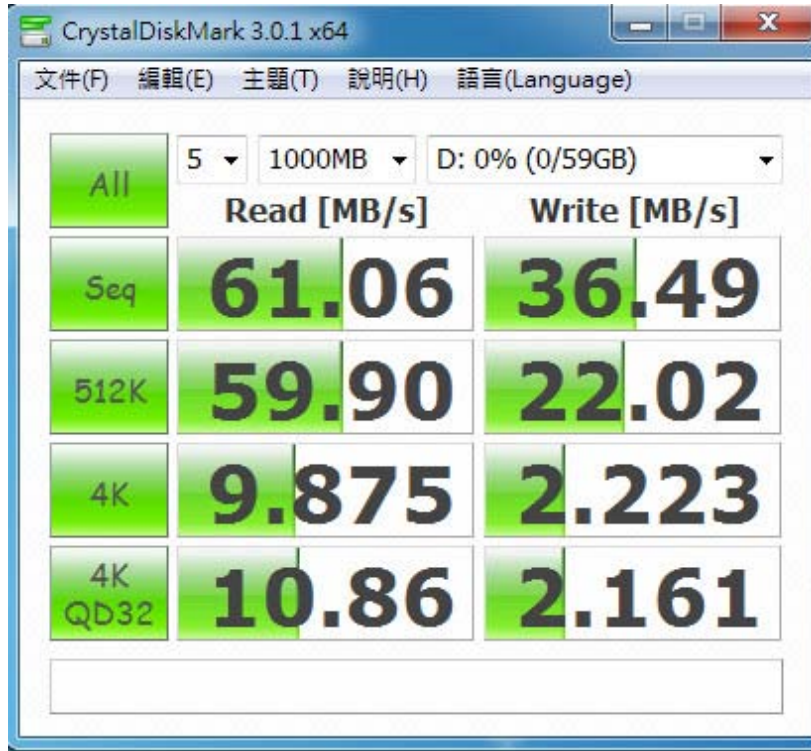
- 2.4.1 In BIOS(Basic Input/Output Setup) – Change AHCI Mode into IDE Mode
- 2.4.2 In Windows 7, formatted SSD to NTFS Mode. Don't install any program.

CB949MB / IDE 2.5" 44pin SSD to SATA

2.5 CrystalDiskMark 3.0.1 x64 performance test

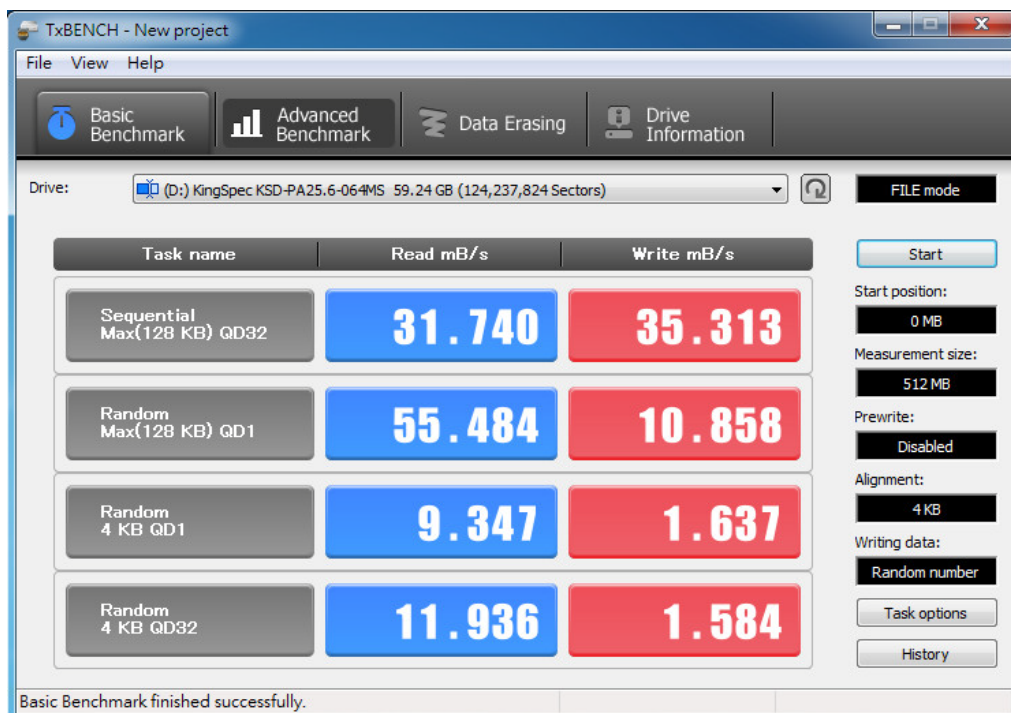
※Benchmark (Sequential Read & Write / default = 1MB)

2.5.1 Used KingSpec 64G/KSD-PA25.6-064MS performance as below:



2.6 TxBENCH Benchmark 0.95 Beta performance

2.6.1 Used KingSpec 64G/KSD-PA25.6-064MS performance as below:

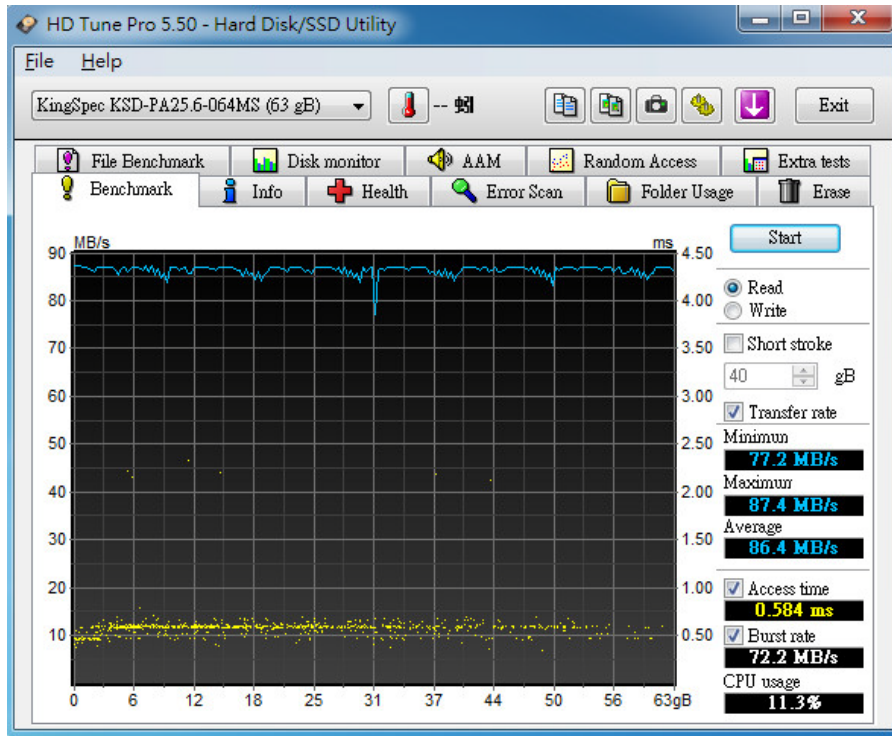


CB949MB / IDE 2.5" 44pin SSD to SATA

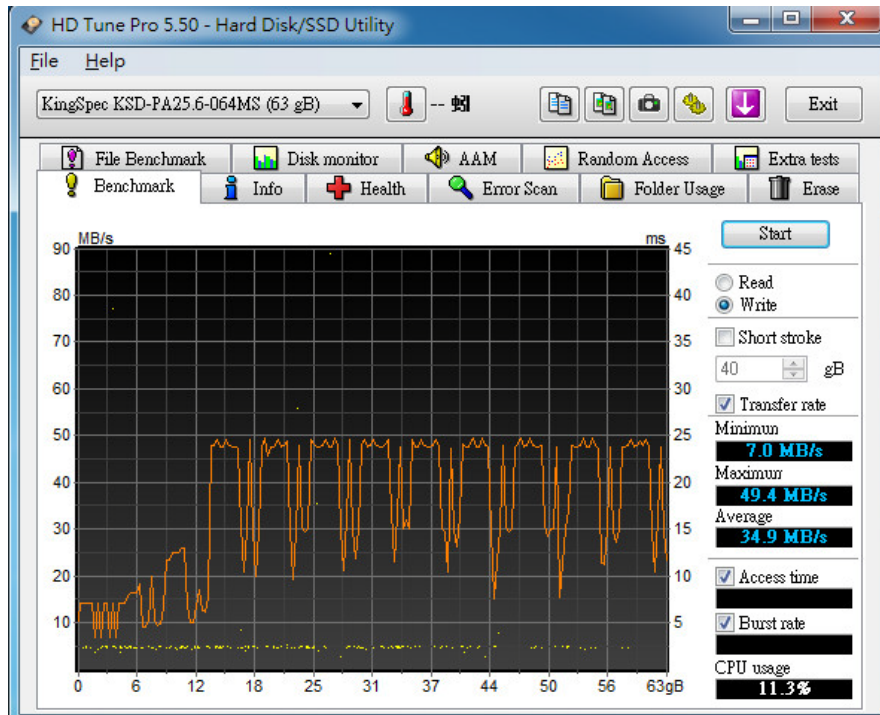
2.7 HD Tune pro 5.5 performance test

※Benchmark (Sequential Read & Write/ default block size = 8MB)

2.7.1 Used KingSpec 64G Formatted sequential Read performance as below:



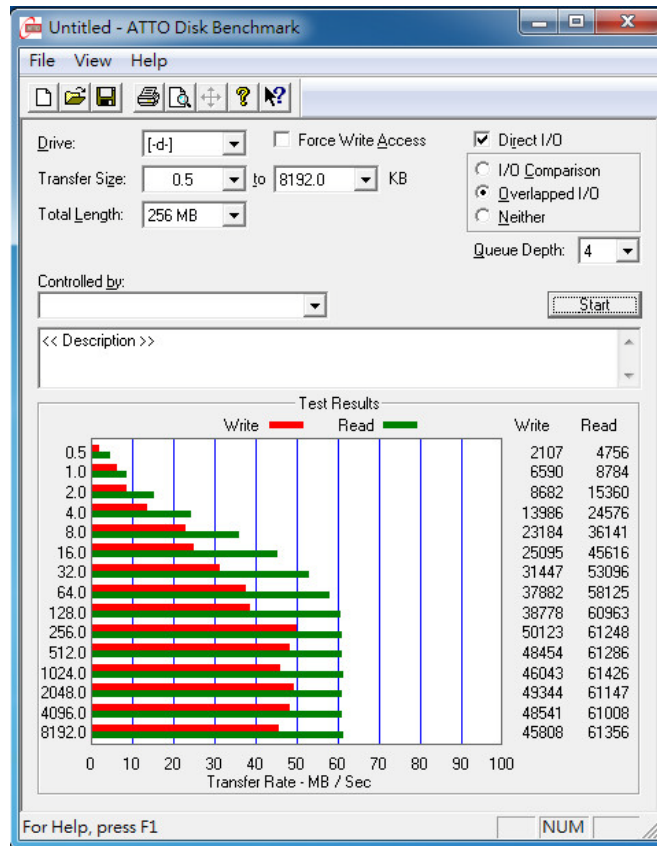
2.7.2 Used KingSpec 64G unformatted sequential Write performance as below:



CB949MB / IDE 2.5" 44pin SSD to SATA

2.8 ATTO Disk BenchMark

2.8.1 Used KingSpec 64G/KSD-PA25.6-064MS performance as below:



2.9 AnvilBenchmark performance test

2.9.1 Used KingSpec 64G/KSD-PA25.6-064MS performance as below:

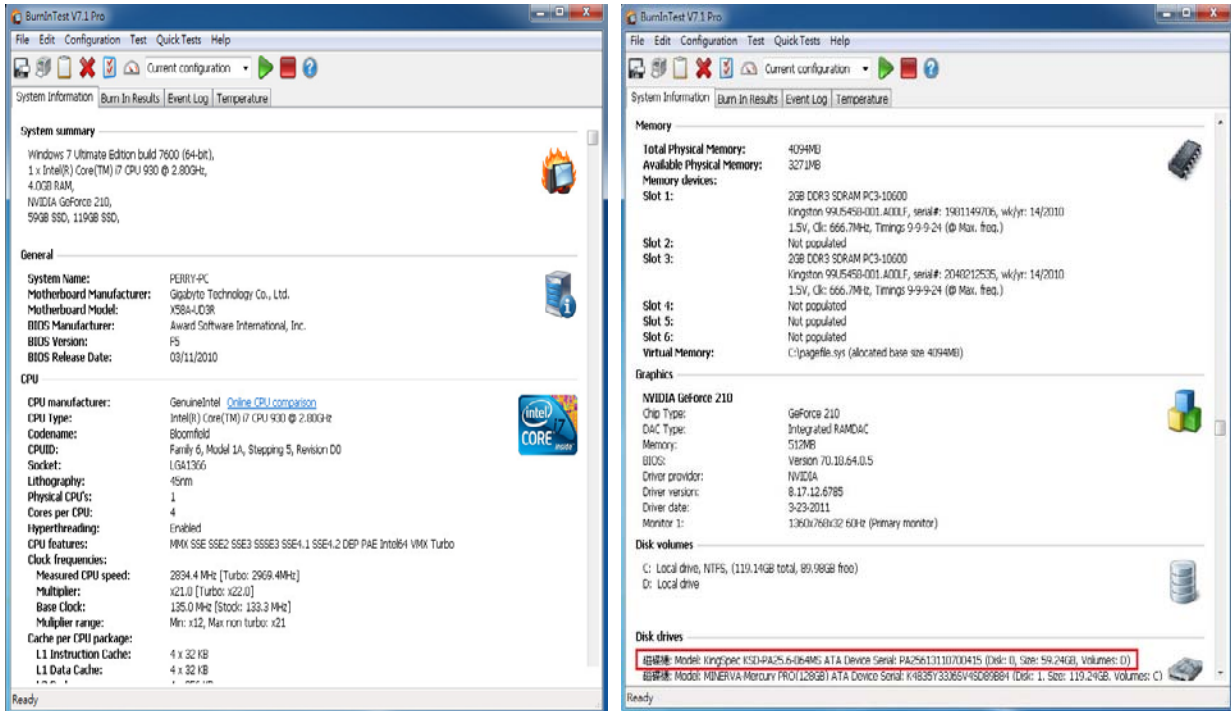


CB949MB / IDE 2.5" 44pin SSD to SATA

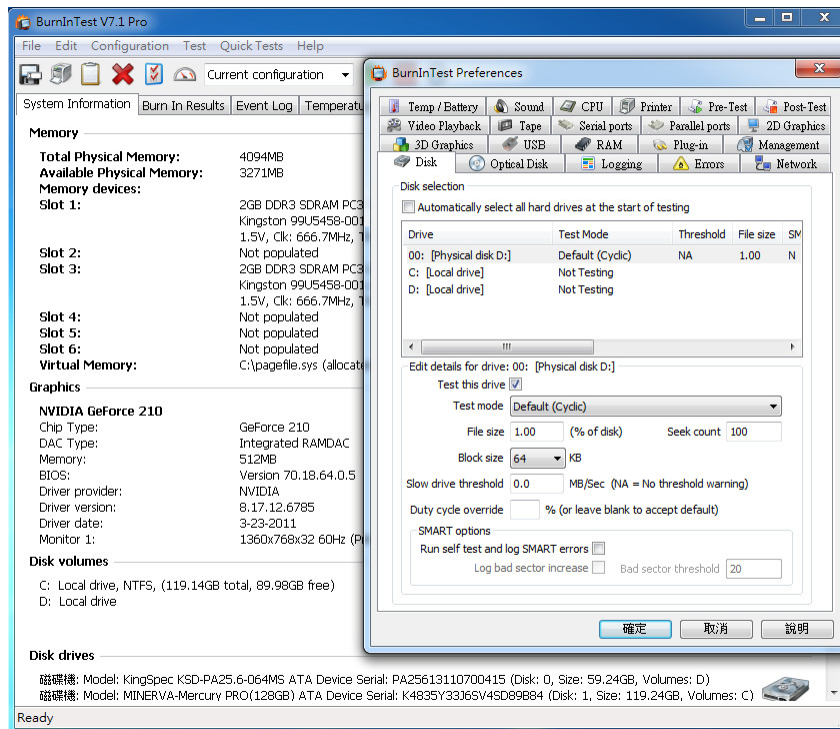
Burn In Tests and Results

3.1 BurnInTest v7.1 Pro

3.1.1 system information for KingSpec 64G/KSD-PA25.6-064MS as below:

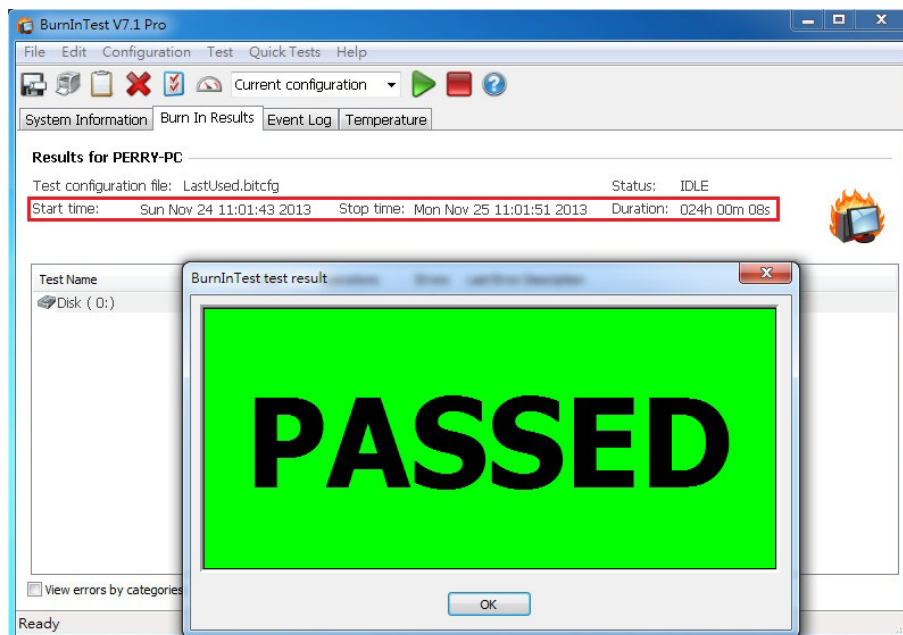


3.1.2 show Disk test mode(default cyclic -- 10 ways cycle test)



CB949MB / IDE 2.5" 44pin SSD to SATA

3.1.3 show KingSpec 64G/KSD-PA25.6-064MS 24-hour Burn-in test **PASSED**



4. Summary

IDE 2.5" SSD is PATA Interface, Current spec I/O speed, max. to 133MB/s.
I/O performance of CB949MB adapter is based on IDE 2.5" SSD