

# AD912A Assembly Guide

Before Assembly:

1. Please check the accessory list before assembly. Contact your local distributor if you find any parts missing.
2. Please read through the installation guide.

## Accessory Package

(1)M2x3 Screw \*3pcs

P/N: 13MISW00005M11



[for Full size SSD]

(2)M2x6mm(H) screw \*3pcs

P/N: 13MISW00001M11



[for Half size SSD]

(2)Copper Nut /H: 4.0mm \*3pcs

P/N: 13MICA00001M05



[for Half size SSD]

(3)M2 nut \*3pcs

P/N: 13MINU00001M11



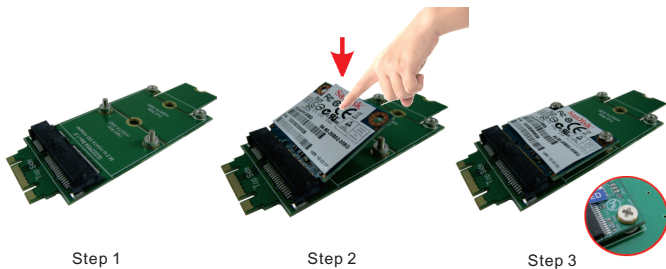
[for Half size SSD]

(4)M3x3 Screw \*1pc

P/N: 13MISW00010M11



[for Adapter]



Step 1

Step 2

Step 3

Step1: Put 2pcs of copper nuts on the holes for the half size mSATA SSD and fix with 2pcs of M2x6mm screws.  
Insert mSATA SSD into mini PCI-e socket.

Step 2. Press mSATA SSD down and aim to the copper nuts below.

Step 3. Fix mSATA SSD on the adapter with 2pcs of M2\*3 screws.

If your mSATA SSD is Full size, pls ignore step 1.

Use M2 x 3 Screw to fix mSATA SSD.