

# AD906A Assembly Guide

Before Assembling:

1. Please check the accessory list before assembly. Contact your local dealer if you find any parts missing.
2. Please read through the assembly guide.

## Accessory Package

(1)M3x5 Screw \*1pc  
P/N: 13MISW00005M11



[for M.2 NGFF SSD]

(2)M3 Nut \*1pc  
P/N: 13MINU00002M11

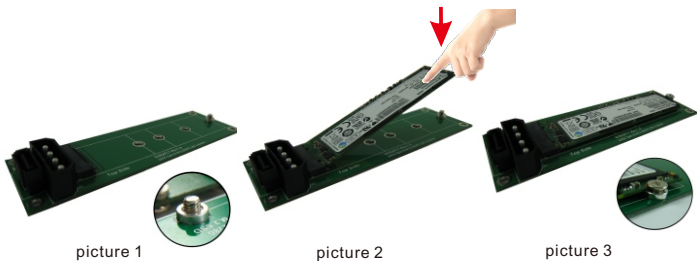


[for M.2 NGFF SSD]

(3)Copper Nut /H: 1.45mm \*1pc  
P/N: 13MICA00001M05



[for M.2 NGFF SSD]



Step 1: Put copper nut on the same side of the NGFF connector;  
and fix M3x5mm screw from bottom to top of the adapter.(picture 1).

Step 2: Insert M.2 NGFF SSD into M.2 67pin socket. Press down M.2 NGFF  
SSD and aim to the copper nut hole.(picture 2)




Step 3: Using M3 nuts to fix M.2 NGFF SSD on the adapter (picture 3),  
namely complete the installation.

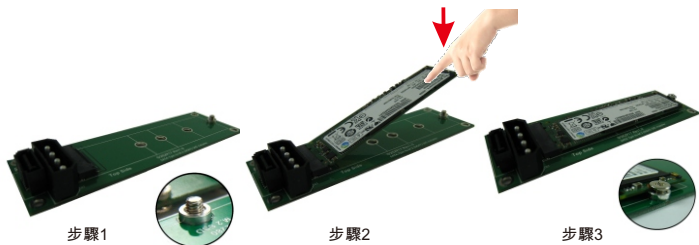
# AD906A 安裝說明

## 準備事項:

1. 首先檢查以下所列配件清單. 如有短少, 請聯繫當地經銷商.
2. 請閱讀安裝流程說明.

## 組裝套件

(1)M3x3 螺絲 *1pc P/N: 13MISW00010M11		[供 M.2 (2280) SSD]
(2)M3x5 螺絲 *1pc P/N: 13MISW00005M11		[供 M.2 NGFF SSD]
(3)M3 螺帽 *1pc P/N: 13MINU00002M11		[供 M.2 NGFF SSD]



步驟1

步驟2

步驟3

步驟 1: 將合金銅柱放於轉接卡上適合您SSD的長度的固定孔,並使用M3x5螺絲由轉接卡底部往上鎖住轉接卡及銅柱(如圖一)

步驟 2: 將M.2 NGFF SSD 插入 67針 連接器中.按下M.2 NGFF SSD 使SSD與轉接卡呈現水平並與合金銅柱孔位對齊(如圖二).

步驟 3: 使用 M3螺帽固定M.2 NGFF SSD於轉接卡上(如圖三),即完成安裝程序.

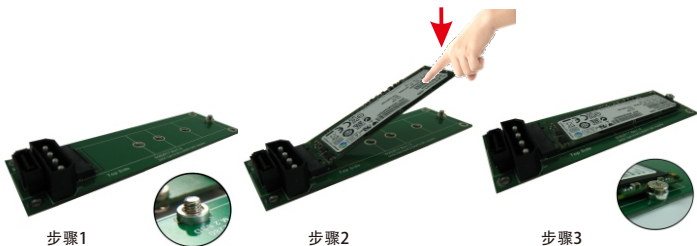
# AD906A 安装说明

准备事项:

1. 首先检查以下所列配件清单. 如有短少, 请联系当地经销商.
2. 请阅读安装流程说明.

组装套件

(1)M3x3 螺丝 *1pc P/N: 13MISW00010M11		[供 M.2 (2280) SSD]
(2)M3x5 螺丝 *1pc P/N: 13MISW00005M11		[供 M.2 NGFF SSD]
(3)M3 螺帽 *1pc P/N: 13MINU00002M11		[供 M.2 NGFF SSD]



步骤 1: 将合金铜柱放于转接卡上适合您SSD的长度的固定孔, 并使用M3x5螺丝由转接卡底部往上锁住转接卡及铜柱(如图一)

步骤 2: 将M.2 NGFF SSD 插入 67针 连接器中. 按下M.2 NGFF SSD 使SSD 与转接卡呈现水平并与合金铜柱孔位对齐(如图二).

步骤 3: 使用 M3螺帽固定M.2 NGFF SSD于转接卡上(如图三), 即完成安装程序.