

AD902D Assembly Guide

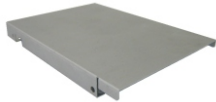
Before Assembling:

1. Please check the accessory list before assembly. Contact your local dealer if you find any parts missing.
2. Please read through the assembly guide.

2.5" Aluminum Housing

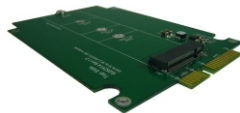


Top side

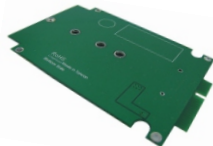


Bottom side

AD902D Adapter



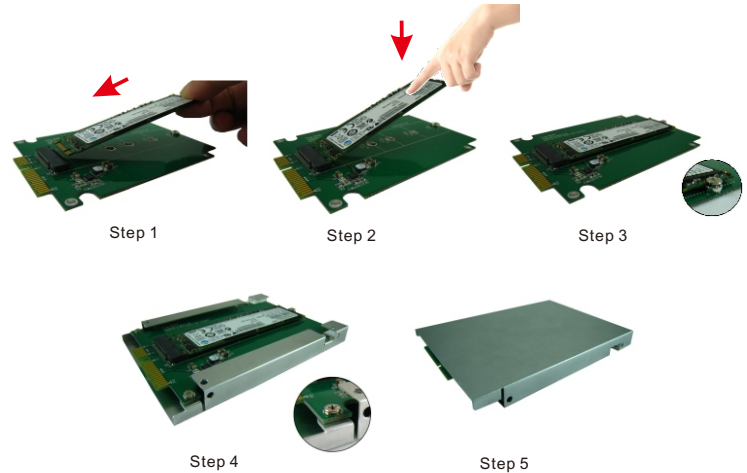
Top side



Bottom side

Accessory Package

(1)M3x5 Screw *1pc P/N: 13MISW00005M11		[for M.2 NGFF SSD]
(2)M3 Nut *1pc P/N: 13MINU00002M11		[for M.2 NGFF SSD]
(3)Copper Nut /H: 1.45mm *1pc P/N: 13MICA00001M05		[for M.2 NGFF SSD]
(4)M2x3 screw *5pcs P/N: 13MISW00005M11		[for 2.5" Housing]



Step 1: Put copper nut on the same side of the NGFF connector; and screw M3x5mm screw from bottom to top of the adapter. Insert M.2 NGFF SSD into M.2 67pin socket.(Figure 1)

Step 2: Press down M.2 NGFF SSD and aim to the copper nut hole.(Figure 2)

Step 3: Using M3 nuts to fixed M.2 NGFF SSD on the adapter (Figure 3), namely complete the installation.

If your M.2 NGFF SSD is 2280 form factor, pls ignore step 1. Use M3 x 3 Screw to fix M.2 NGFF SSD.

Step 4: Assembly adapter into 2.5" SSD aluminum housing with 4pcs of M2x3 screw to fix.(Figure 4)

Step 5: Turn down the complete 2.5" SSD (M.2 SSD +adapter+2.5" housing), assemble it into laptop or desktop PC.