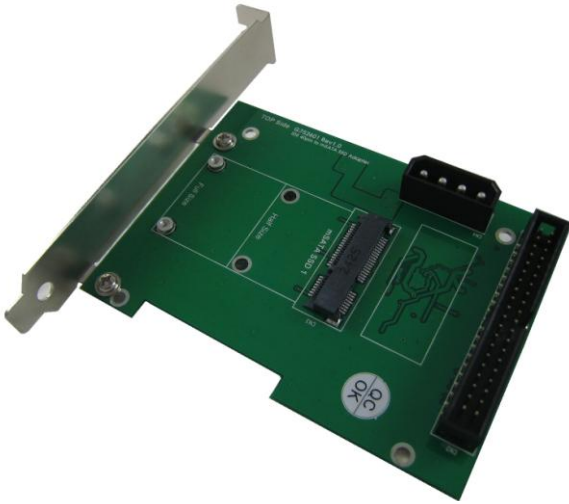




AD263FB9 / AD263FE9

IDE 40pin Adapter for mSATA SSD



AD263FB9 Adapter with PCI-e Bracket



AD263FE9 Adapter with 3.5" Bracket



Sandisk mSATA SSD



Intel mSATA SSD

AD263FB9/E9 is a 3.5" IDE SSD. It uses a 3.5" Frame Bracket, coupled with the mSATA SSD combination to IDE adapter. When assembled, it can operate in a variety of operating systems. Such as DOS, Windows 95, 98, XP, 2000, Vista, Win 7, Linux, Unix, and so on. AD263FB9/E9 adapter allows the installation of mSATA SSD as system disk, boot the operating system directly, without having to install any drivers, but does not affect the execution speed of the SSD storage devices.

Specifications:

- Fully compliant with SATA revision 3.0
- PCI Express Mini Card Electromechanical Specification 1.2
- PWM Power IC / 1.4MHz 5.5V synchronous buck converter
- mSATA input voltage: 3.3V \pm 5%, input current: 3A
- Support ATA/ATAPI-7 specification.
- ATA/ATAPI Ultra DMA Mode 0, 1, 2, 3, 4, 5, 6, 7.
- ATA/ATAPI PIO Mode 0, 1, 2, 3, 4.
- Support the following form factor mSATA SSD:
Full size: 50.95 mm (L) x 30mm (W)
Half size: 26.8 mm (L) x 30 mm (W)
- Operating temperature — Commercial (0° C to +70° C)

Application:

- Desktop
- Internet Appliances, Kiosks
- Industrial Computers, Embedded Machine
- Routers, Firewalls

Support mSATA Storage Device:

- Intel 525,310, 311 Series mSATA module SSD
- Samsung PM800, PM810, PM830 Series mSATA module SSD
- Toshiba HG,SG2 Series mSATA Module SSD
- Sandisk Gen 2 pSSD, P4 Meteor5 Series mSATA module SSD
- Any compatible mSATA SSD Card

Ordering information:

- AD263FB9 --- mSATA SSD to IDE 40-pin adapter with PCI-e Bracket
- AD263FE9 --- mSATA SSD to IDE 40-pin adapter with 3.5" Frame Bracket

MINERVA INNOVATION COMPANY

9F, 227, Sec. 3, Jhongsing Road, Sindian Disti, New Taipei City, 23114, Taiwan, R.O.C.

Tel: 886 2 29158477

Fax: 886 2 29129025

<http://www.minerva.com.tw>

e-mail: sales@minerva.com.tw